

The electrical equipment is represented by the pendant push-button station and the electrical panel.

Reference power supply is characterised by a voltage of 380 V and a frequency of 50 Hz (110 V for the auxiliary circuit).

Different values of power supply can be furnished upon request.

## Standard protection and insulation

- ▶ lifting motors: IP54, insulation class F
- ▶ travel motors: IP54, insulation class F
- ▶ motor brakes: IP23, insulation class F
- ▶ electrical panel: IP54, max. insulation voltage 2500 V
- ▶ connectors: IP65, max. insulation voltage 600 V
- ▶ push-button station: IP65, max. insulation voltage 500 V
- ▶ limit switches: IP54, max. insulation voltage 500 V



## Electrical Panel

The electrical panel consists of:

- ▶ A cubicle, fabricated from sheet steel, with hinged front door, painted with epoxy enamel RAL 5009
- ▶ A triple-pole load breaking isolating switch with external operating handle mechanically inter-locked with the sheet steel case door
- ▶ Contactors mechanically interlocked, relays and timers for dual speeds
- ▶ Fuses for protection against short circuits and motor overloads
- ▶ An electric horn for acoustic warning
- ▶ Wiring is carried out with single-core flame-resistant conductors, featuring a minimum cross sectional area of 1.5 mm<sup>2</sup>. Connections to terminal boards are carried out through metallic terminations.
- ▶ The terminal board is characterised by numbered terminals conforming with the wiring diagram. This ensures simplicity and safety of wiring. All parts of the electrical panel that remain energised even when the load breaking isolating switch is switched off, are appropriately shielded.

## Pendant push-button station

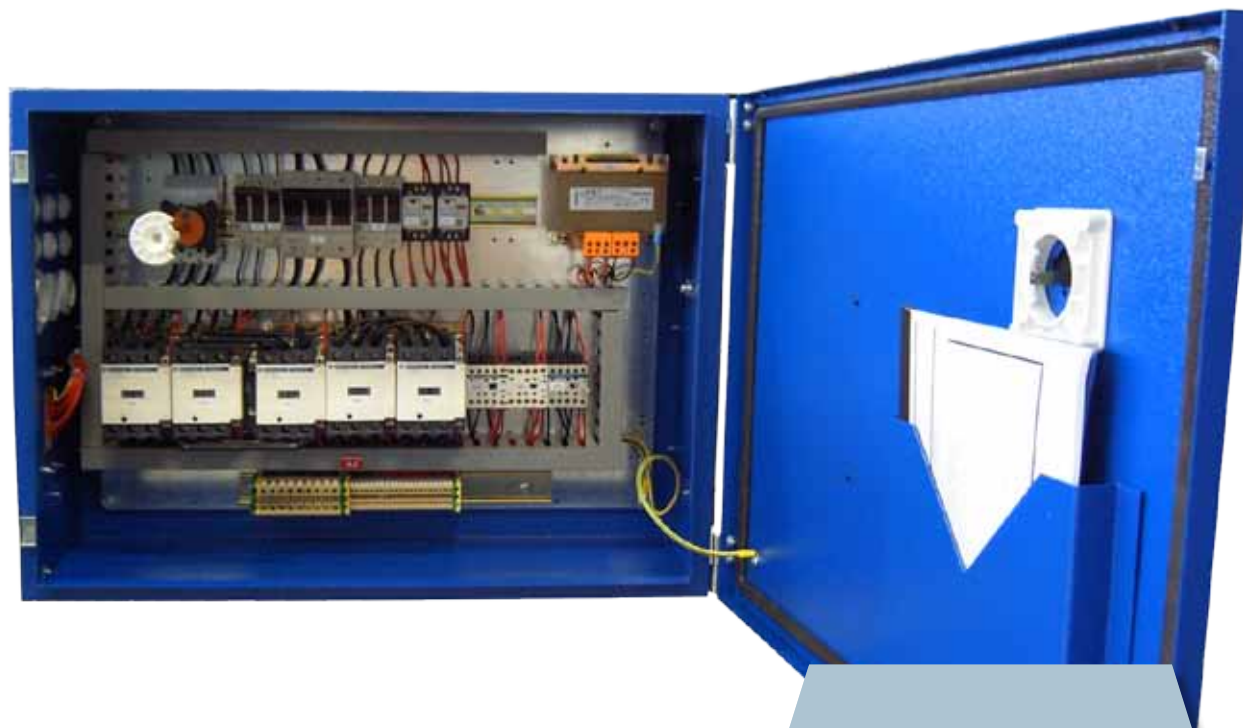
The pendant push-button station for the crane control consists of:

- ▶ A housing of shockproof thermoplastic material
- ▶ Shrouded push-buttons with automatic return for all motions (2-speed buttons for dual speeds)
- ▶ Shrouded ON / ALARM push-button with automatic return
- ▶ A mushroom-shaped STOP push-button with non-return lock and manual rotary release - plates, placed by every push-button, describing all functions of the crane

The push-button station is furnished along with 8 metres of self-supporting multi-core cable equipped with a quick detachable connector that makes the assembling easy.



# QUADRI ELETTRICI



Quadro elettrico Standard Elettromeccanica



Quadro elettrico a connettori per carro ponte con inverter sollevamento, scorrimento ponte, traslazione carro

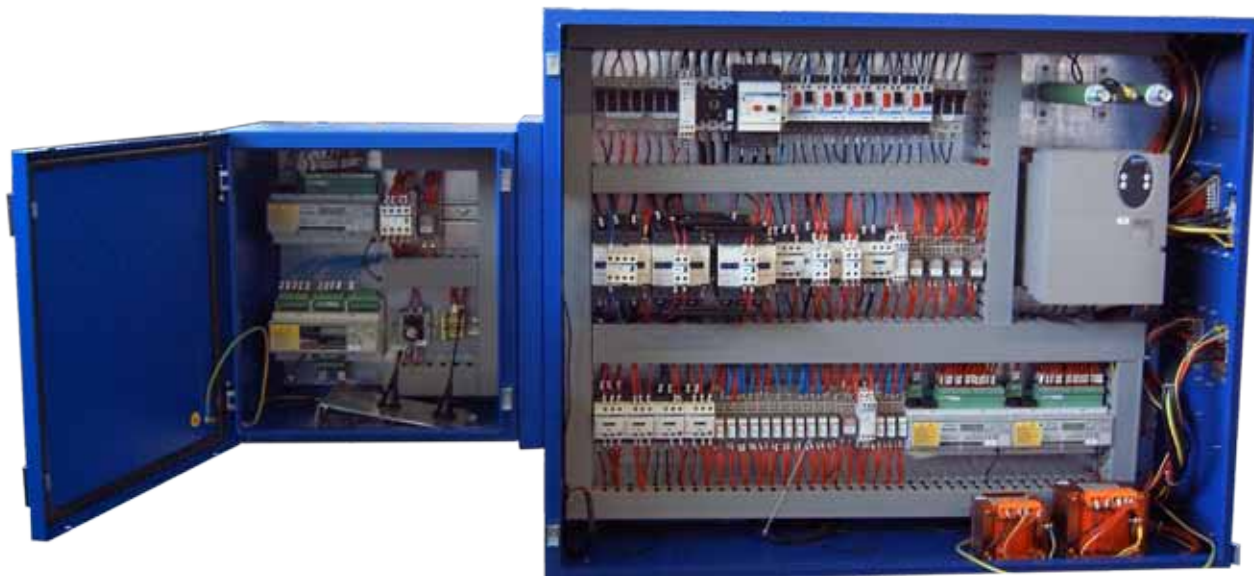




Quadro elettrico con connettori per carrelli paranco



Quadro elettrico con morsetti e pressacavi per carrelli paranco



Quadro traslazione carri Master / Slave con KIT di trasmissione dati via radio



Quadro per carro ponte acciaieria



Quadro elettrico per carro ponte speciale



Quadro elettrico per carro ponte speciale con inverter di sollevamento da 132 kW





Fasi di produzione prodotti con collaudo:

- ▶ Studio di fattibilità dell'azionamento elettrico
- ▶ Progettazione e sviluppo secondo le specifiche fornite
- ▶ Disegno del quadro per mezzo del programma di progettazione elettrica EPLAN
- ▶ Costruzione presso ns. officina elettrica
- ▶ Collaudo con strumentazione certificata