

Webbing slings Rated capacities for different slinging methods

Factor		WLL (kg) with one webbing sling					WLL (kg) with two webbing slings			
		straight pull	choke hitch	basket angle β			straight angle β		choke hitch angle β	
				up to 7°	7°-45°	45°-60°	7°-45°	45°-60°	7°-45°	45°-60°
		1.0	0.8	2.0	1.4	1.0	1.4	1.0	1.12	0.8
1000 kg		1000	800	2000	1400	1000	1400	1000	1120	800
2000 kg		2000	1600	4000	2800	2000	2800	2000	2240	1600
3000 kg		3000	2400	6000	4200	3000	4200	3000	3360	2400
4000 kg		4000	3200	8000	5600	4000	5600	4000	4480	3200
5000 kg		5000	4000	10000	7000	5000	7000	5000	5600	4000
6000 kg		6000	4800	12000	8400	6000	8400	6000	6720	4800
8000 kg		8000	6400	16000	11200	8000	11200	8000	8960	6400
10000 kg		10000	8000	20000	14000	10000	14000	10000	11200	8000

Round slings Rated capacities for different slinging methods

Factor		WLL (kg) with one round sling					WLL (kg) with two round slings					
		straight pull	choke hitch	basket angle β			straight angle β		choke hitch angle β			
				up to 7°	7°-45°	45°-60°	7°-45°	45°-60°	7°-45°	45°-60°		
		1.0	0.8	2.0	1.4	1.0	0.7	0.5	1.4	1.0	1.12	0.8
1000 kg		1000	800	2000	1400	1000	700	500	1400	1000	1120	800
2000 kg		2000	1600	4000	2800	2000	1400	1000	2800	2000	2240	1600
3000 kg		3000	2400	6000	4200	3000	2100	1500	4200	3000	3360	2400
4000 kg		4000	3200	8000	5600	4000	2800	2000	5600	4000	4480	3200
5000 kg		5000	4000	10000	7000	5000	3500	2500	7000	5000	5600	4000
6000 kg		6000	4800	12000	8400	6000	4200	3000	8400	6000	6720	4800
8000 kg		8000	6400	16000	11200	8000	5600	4000	11200	8000	8960	6400
10000 kg		10000	8000	20000	14000	10000	7000	5000	14000	10000	11200	8000



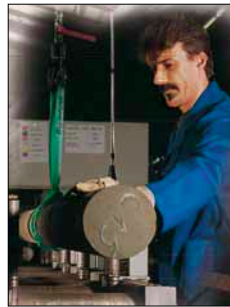
Round sling with duplex sleeve model RSD

Made from polyester (PES), EN 1492-2 with double stitch-less protection sleeve, with capacity label.

Features

- With double protection sleeve, PU-starched, thermally fixed.
- Colour coding of the protective sleeve.
- Printed-on capacities.
- Woven tonnage stripes, per ton capacity 1 stripe (applies only to round slings up to 10t).
- Low weight allows easy handling.
- Protection against hand injuries.
- Protection against cargo surface damage.
- Highly flexible and adaptable to given shapes.
- UV-resistant, eliminating material ageing or embrittlement.
- Heat resistant up to + 100 °C.
- Moisture-resistant fabric, thus preventing frost damage (up to approx. - 40 °C).

Increased capacities on request.



Technical data model RSD

Model	Colour code EN 1492	Capacity WLL, with one sling, straight pull kg	Capacity WLL, with one sling, basket, angle β up to 7° kg	Capacity WLL, with one sling, basket, angle β 7°- 45° kg	Capacity WLL, with one sling, basket, angle β 45°- 60° kg	Capacity WLL, with one sling, choke hitch kg	Width approx. under load mm	Thickness approx. under load mm	Shortest possible length for special makes mm
RSD-01000	violet	1000	2000	1400	1000	800	52	5	500
RSD-02000	green	2000	4000	2800	2000	1600	57	6	500
RSD-03000	yellow	3000	6000	4200	3000	2400	71	9	500
RSD-04000	grey	4000	8000	5600	4000	3200	76	9	1000

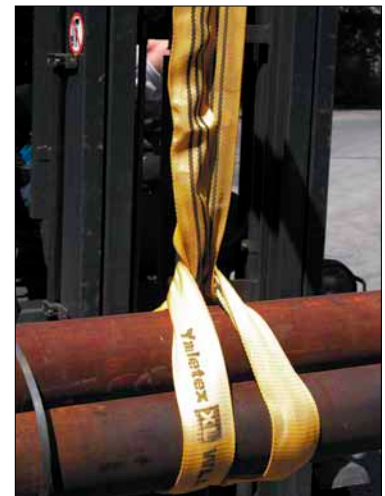
Special lengths available on request.

XL-Round sling model RSX

Made from polyester (PES), EN 1492-2 with extra strong stitchless protection sleeve, with capacity label.

Features

- Optimized woven structure, PU-starched, thermally fixed.
- Easy identification of the annually required UVV tests through an additional label showing a check list.
- Colour coding of the protective sleeve.
- Printed-on capacities.
- Woven tonnage stripes, per ton capacity 1 stripe (applies only to round slings up to 10t).
- Low weight allows easy handling.
- Protection against hand injuries.
- Protection against cargo surface damage.
- Highly flexible and adaptable to given shapes.
- UV-resistant, eliminating material ageing or embrittlement.
- Heat resistant up to + 100 °C.
- Moisture-resistant fabric, thus preventing frost damage (up to approx. -40 °C).



! Further capacities up to 100t and special lengths can be delivered on request.

Technical data model RSX

Model	Colour code EN 1492	Capacity WLL, with one sling, straight pull kg	Capacity WLL, with one sling, basket, angle β up to 7° kg	Capacity WLL, with one sling, basket, angle β 7°- 45° kg	Capacity WLL, with one sling, basket, angle β 45°- 60° kg	Capacity WLL, with one sling, choke hitch kg	Width approx. under load mm	Thickness approx. under load mm	Shortest possible length for special makes mm
RSX-01000	violet	1000	2000	1400	1000	800	52	10	500
RSX-02000	green	2000	4000	2800	2000	1600	57	10	500
RSX-03000	yellow	3000	6000	4200	3000	2400	71	15	500
RSX-04000	grey	4000	8000	5600	4000	3200	76	15	1000
RSX-05000	red	5000	10000	7000	5000	4000	86	20	1000
RSX-06000	brown	6000	12000	8400	6000	4800	96	20	2000
RSX-08000	blue	8000	16000	11200	8000	6400	112	25	2000
RSX-10000	orange	10000	20000	14000	10000	8000	130	30	2000



Round sling with single sleeve model RSE

Made from polyester (PES), EN 1492-2 with stitchless protection sleeve, with capacity label.

Features

- With single sleeve, PU-starched, thermally fixed.
- Colour coding of the protective sleeve.
- Printed-on capacities.
- Woven tonnage stripes, per ton capacity 1 stripe (applies only to round slings up to 10t).
- Low weight allows easy handling.
- Protection against hand injuries.
- Protection against cargo surface damage.
- Highly flexible and adaptable to given shapes.
- UV-resistant, eliminating material ageing or embrittlement.
- Heat resistant up to + 100 °C.
- Moisture-resistant fabric, thus preventing frost damage (up to approx. - 40 °C).

Special lengths available on request.

Technical data model RSE

Model	Colour code EN 1492	Capacity WLL, with one sling, straight pull kg	Capacity WLL, with one sling, basket, angle β up to 7° kg	Capacity WLL, with one sling, basket, angle β 7°- 45° kg	Capacity WLL, with one sling, basket, angle β 45°- 60° kg	Capacity WLL, with one sling, choke hitch kg	Width approx. under load mm	Thickness approx. under load mm	Shortest possible length for special makes mm
RSE-01000	violet	1000	2000	1400	1000	800	50	10	500
RSE-02000	green	2000	4000	2800	2000	1600	55	10	500
RSE-03000	yellow	3000	6000	4200	3000	2400	60	15	500
RSE-04000	grey	4000	8000	5600	4000	3200	75	15	1000
RSE-05000	red	5000	10000	7000	5000	4000	85	20	1000
RSE-06000	brown	6000	12000	8400	6000	4800	90	20	2000
RSE-08000	blue	8000	16000	11200	8000	6400	100	25	2000
RSE-10000	orange	10000	20000	14000	10000	8000	120	30	2000

20 RSE - Round slings, EN 1492-2

with different working loads and lengths.

With each sport bag you receive:

- 2 x RSE 01000, WLL 1000 kg, 0,5 m length
- 4 x RSE 01000, WLL 1000 kg, 1,0 m length
- 2 x RSE 01000, WLL 1000 kg, 1,5 m length
- 4 x RSE 01000, WLL 1000 kg, 2,0 m length
- 2 x RSE 02000, WLL 2000 kg, 1,0 m length
- 2 x RSE 02000, WLL 2000 kg, 2,0 m length
- 2 x RSE 02000, WLL 2000 kg, 3,0 m length
- 2 x RSE 03000, WLL 3000 kg, 2,0 m length



EAN-No.: 4025092360555
 Minimum purchase: 3 bags



Including sports bag

Round sling assembly Rated capacities for different slinging methods

	single legged		double legged				three and four legged	
	straight pull	choke hitch	straight pull angle β 0°-45°	choke hitch	straight pull angle β 45°-60°	choke hitch	straight pull angle β 0°-45° 45°-60°	
Factor	1.0	0.8	1.4	1.1	1.0	0.8	2.1	1.5
1000 kg	1000	800	1400	1100	1000	800	2100	1500
2000 kg	2000	1600	2800	2200	2000	1600	4200	3000
3000 kg	3000	2400	4200	3300	3000	2400	6300	4500
5000 kg	5000	4000	7000	5500	5000	4000	10500	7500
8000 kg	8000	6400	11200	8800	8000	6400	16800	12000



**Round sling assembly
single legged
model RSG**

EN 1492-2 with high tensile forgings EN 1677.

Technical data model RSG single legged

Model	Capacity WLL straight pull kg
RSG-01000-1-SIKA	1000
RSG-02000-1-SIKA	2000
RSG-03000-1-SIKA	3000
RSG-05000-1-SIKA	5000
RSG-08000-1-SIKA	8000



**Round sling assembly
double legged
model RSG**

EN 1492-2 with high tensile forgings EN 1677.

Technical data model RSG double legged

Model	Capacity WLL, straight pull angle β 0°-45° kg	Capacity WLL, straight pull angle β 45°-60° kg
RSG-01000-2-SIKA	1400	1000
RSG-02000-2-SIKA	2800	2000
RSG-03000-2-SIKA	4200	3000
RSG-05000-2-SIKA	7000	5000
RSG-08000-2-SIKA	11200	8000

Round sling assembly
three legged
model RSG

EN 1492-2 with high tensile forgings EN 1677.

Technical data model RSG three legged

Model	Capacity WLL, straight pull angle β 0°-45° kg	Capacity WLL, straight pull angle β 45°-60° kg
RSG-01000-3-SIKA	2100	1500
RSG-02000-3-SIKA	4200	3000
RSG-03000-3-SIKA	6300	4500
RSG-05000-3-SIKA	10500	7500
RSG-08000-3-SIKA	16800	12000



Round sling assembly
four legged
model RSG

EN 1492-2 with high tensile forgings EN 1677.

Technical data model RSG four legged

Model	Capacity WLL, straight pull angle β 0°-45° kg	Capacity WLL, straight pull angle β 45°-60° kg
RSG-01000-4-SIKA	2100	1500
RSG-02000-4-SIKA	4200	3000
RSG-03000-4-SIKA	6300	4500
RSG-05000-4-SIKA	10500	7500
RSG-08000-4-SIKA	16800	12000

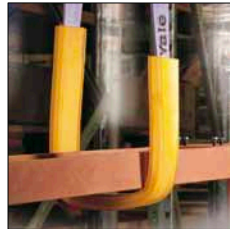




Endless flat webbing sling, single ply model HSE

Made from polyester (PES), EN 1492-1 form A2, with capacity label.

Other capacities up to 20t and special lengths available on request.



- Heat resistant up to + 100 °C.
- Moisture-resistant fabric, thus preventing frost damage (up to approx. -40 °C).
- Low elongation (< 4%).

Features

- Single ply, PU-starched, thermally fixed.
- Colour coded webbing (only model HSE).
- Woven tonnage stripes (only model HSE).
- Low weight allows easy handling.
- Protection against hand injuries.
- Protection against cargo surface damage.
- Consistent pressure distribution onto pressure- and pull sensitive loads.
- UV-resistant, eliminating material ageing or embrittlement.

Technical data model HSE

Model	Colour code EN 1492	Capacity WLL, with one sling, straight pull kg	Capacity WLL, with one sling, basket, angle β up to 7° kg	Capacity WLL, with one sling, basket, angle β 7°- 45° kg	Capacity WLL, with one sling, basket, angle β 45°- 60° kg	Capacity WLL, with one sling, choke hitch kg	Webbing width mm	Shortest possible length for special makes mm
HSE-01000	violet	1000	2000	1400	1000	800	30	500
HSE-02000	green	2000	4000	2800	2000	1600	60	500
HSE-03000	yellow	3000	6000	4200	3000	2400	90	500
HSE-04000	grey	4000	8000	5600	4000	3200	120	1000

Endless flat webbing sling, single ply, one-way model HSE-E

Made from polyester (PES), DIN 60005, with capacity label.



Technical data model HSE-E one-way-sling

Model	Capacity WLL, with one sling, straight pull kg	Capacity WLL, with one sling, basket, angle β up to 7° kg	Capacity WLL, with one sling, basket, angle β 7°- 45° kg	Capacity WLL, with one sling, basket, angle β 45°- 60° kg	Capacity WLL, with one sling, choke hitch kg	Webbing width mm	Shortest possible length for special makes mm
HSE-E-00500 one-way-sling	500	1000	700	500	400	25	200
HSE-E-00750 one-way-sling	750	1500	1050	750	600	48	200
HSE-E-01000 one-way-sling	1000	2000	1400	1000	800	35	200
HSE-E-01500 one-way-sling	1500	3000	2100	1500	1200	50	250

**Flat webbing sling,
duplex construction,
reinforced eyes
model HBD**

Made from polyester (PES), EN 1492-1 form B2, with capacity label.

Features

- Duplex construction, PU-starched, thermally fixed.
- With reinforced eyes.
- Woven tonnage stripes.
- Low weight allows easy handling.
- Protection against hand injuries.
- Protection against cargo surface damage.
- Consistent pressure distribution onto pressure- and pull sensitive loads.
- UV-resistant, eliminating material ageing or embrittlement.
- Heat resistant up to + 100 °C.
- Moisture-resistant fabric, thus preventing frost damage (up to approx. - 40 °C).
- Low elongation (< 4%).



Rapid production of special lengths is possible because of own manufacture.

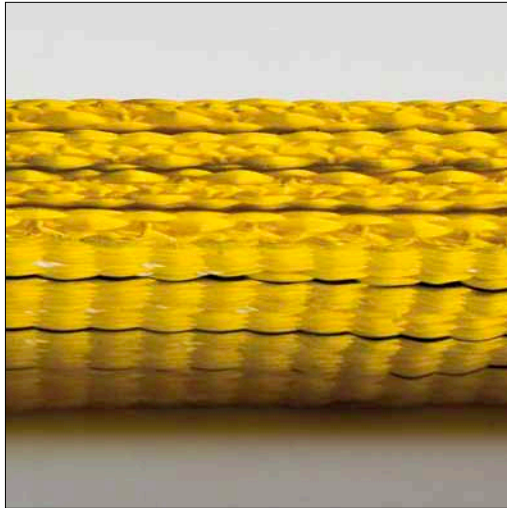
Technical data model HBD

Model	Colour code EN 1492	Capacity WLL, with one sling, straight pull kg	Capacity WLL, with one sling, basket, angle β up to 7° kg	Capacity WLL, with one sling, basket, angle β 7°- 45° kg	Capacity WLL, with one sling, basket, angle β 45°- 60° kg	Capacity WLL, with one sling, choke hitch kg	Webbing width mm	Eye length approx. mm	Eye width approx. mm	Shortest possible length for special makes mm
HBD-01000	violet	1000	2000	1400	1000	800	30	300	15	750
HBD-02000	green	2000	4000	2800	2000	1600	60	350	30	1000
HBD-03000	yellow	3000	6000	4200	3000	2400	90	400	45	1000
HBD-04000	grey	4000	8000	5600	4000	3200	120	500	60	1500
HBD-05000	red	5000	10000	7000	5000	4000	150	550	75	1500
HBD-06000	brown	6000	12000	8400	6000	4800	180	600	90	2000
HBD-08000	blue	8000	16000	11200	8000	6400	240	650	120	2500
HBD-10000	orange	10000	20000	14000	10000	8000	300	900	150	2500

Special lengths available on request.



Rapid production of special lengths is possible because of own manufacture.



Flat webbing sling, four ply, reinforced eyes model HBQ

Made from polyester (PES), EN 1492-1 form B4, with capacity label.

Colour coding up to 16000 kg not according to EN 1492-1.

Features

- Four-layered stitched, PU-starched, thermally fixed.
- With reinforced eyes.
- Low weight allows easy handling.
- Protection against hand injuries.
- Protection against cargo surface damage.
- Consistent pressure distribution onto pressure- and pull sensitive loads.
- UV-resistant, eliminating material ageing or embrittlement.
- Heat resistant up to + 100 °C.
- Moisture-resistant fabric, thus preventing frost damage (up to approx. - 40 °C).
- Low elongation (< 4%).

Technical data model HBQ

Model	Capacity WLL, with one sling, straight pull kg	Capacity WLL, with one sling, basket, angle β up to 7° kg	Capacity WLL, with one sling, basket, angle β 7°- 45° kg	Capacity WLL, with one sling, basket, angle β 45°- 60° kg	Capacity WLL, with one sling, choke hitch kg	Webbing width mm	Eye length approx. mm	Eye width approx. mm	Shortest possible length for special makes mm
HBQ-04000	4000	8000	5600	4000	3200	60	350	30	1000
HBQ-06000	6000	12000	8400	6000	4800	90	400	45	1000
HBQ-08000	8000	16000	11200	8000	6400	120	500	60	1500
HBQ-10000	10000	20000	14000	10000	8000	150	550	75	1500
HBQ-12000	12000	24000	16800	12000	9600	180	600	90	2000
HBQ-16000	16000	32000	22400	16000	12800	240	650	120	2500
HBQ-20000	20000	40000	28000	20000	16000	300	900	150	2500
HBQ-25000	25000	50000	35000	25000	20000	300	900	150	2500

Webbing sling,
duplex construction,
steel links on both ends
model HBD-SN and
model HBD-SD

Made from polyester (PES), EN 1492-1 form C2 and Cr2, with capacity label.

Features

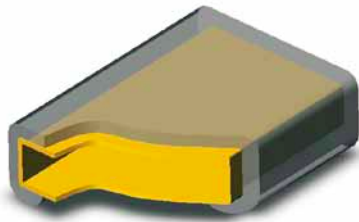
- Duplex construction, PU-starched, thermally fixed.
- With steel D- and DP-links (reevable).
- Woven tonnage stripes.
- Low weight allows easy handling.
- Protection against hand injuries.
- Protection against cargo surface damage.
- Consistent pressure distribution onto pressure- and pull sensitive loads.
- UV-resistant, eliminating material ageing or embrittlement.
- Heat resistant up to + 100 °C.
- Moisture-resistant fabric, thus preventing frost damage (up to approx. - 40 °C).
- Low elongation (< 4%).



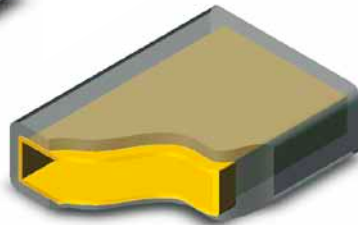
Model HBD-SD - links are reevable, webbing sling also applicable for use in choke hitch.

Technical data model HBD-SN and model HBD-SD

Model	Colour code EN 1492	Capacity WLL, with one sling, straight pull kg	Capacity WLL, with one sling, basket, angle β up to 7° kg	Capacity WLL, with one sling, basket, angle β 7°- 45° kg	Capacity WLL, with one sling, basket, angle β 45°- 60° kg	Capacity WLL, with one sling, choke hitch kg	Webbing width mm	Link dimension HBD-SN bxdxt mm	Link dimension HBD-SD bxdxt mm
HBD-01000	violet	1000	2000	1400	1000	800	30	35 x 13 x 100	30 x 13 x 145
HBD-02000	green	2000	4000	2800	2000	1600	60	75 x 16 x 130	60 x 16 x 165
HBD-03000	yellow	3000	6000	4200	3000	2400	90	105 x 18 x 140	90 x 18 x 190
HBD-04000	grey	4000	8000	5600	4000	3200	120	130 x 22 x 130	120 x 22 x 240
HBD-05000	red	5000	10000	7000	5000	4000	150	170 x 26 x 170	150 x 26 x 300
HBD-06000	brown	6000	12000	8400	6000	4800	180	190 x 26 x 220	180 x 26 x 320
HBD-08000	blue	8000	16000	11200	8000	6400	240	250 x 26 x 230	240 x 26 x 360
HBD-10000	orange	10000	20000	14000	10000	8000	300	300 x 40 x 290	300 x 40 x 435



PU-protection sleeve single-sided,
model PU-SC-1



PU-protection sleeve double-sided,
model PU-SC-2

PU-protection sleeve, single and double-sided model PU-SC

Made from cut resistant polyurethane

With inner fabric insert to ease sliding of the sleeve on the webbing. Standard length 2 and 4 m.

Double PU sleeves cannot be fitted subsequently on webbing slings with steel links. If required, state sleeve length when placing the webbing sling order.

Technical data model PU-SC, single-sided

Model	EAN-No. 4025092*	Webbing width	Dimensions outside/inside	Height
		mm	mm	mm
PU-SC1-030	*357906	30	50 / 40	22
PU-SC1-050	*352680	50	70 / 60	22
PU-SC1-060	*352697	60	80 / 70	22
PU-SC1-090	*352710	90	110 / 100	22
PU-SC1-120	*357951	120	145 / 135	22
PU-SC1-150	*357876	150	170 / 160	22
PU-SC1-180	*357869	180	200 / 190	22
PU-SC1-240	*357883	240	260 / 250	31
PU-SC1-300	*357890	300	330 / 320	31

Technical data model PU-SC, double-sided

Model	EAN-No. 4025092*	Webbing width	Dimensions outside/inside	Height
		mm	mm	mm
PU-SC2-030	*357944	30	50 / 40	22
PU-SC2-050	*352741	50	70 / 60	22
PU-SC2-060	*352758	60	80 / 70	22
PU-SC2-090	*352772	90	110 / 100	22
PU-SC2-120	*352802	120	145 / 135	22
PU-SC2-150	*352826	150	170 / 160	22
PU-SC2-180	*357913	180	200 / 190	22
PU-SC2-240	*357920	240	260 / 250	31
PU-SC2-300	*357937	300	330 / 320	31

! Lengths over 4 m on request.

PU-edge protector model PU-KSW

Made from cut resistant polyurethane

With slots to allow easy attachment and fixing on the round sling.



Technical data model PU-KSW

Model	EAN-No. 4025092*	Diameter mm	Length mm	Suitable for round slings up to WLL kg
PU-KSW-30	*357067	30	80	3000
PU-KSW-50	*357074	50	125	5000

Round sleeve model PU-SG

With fabric insert and PU-coating

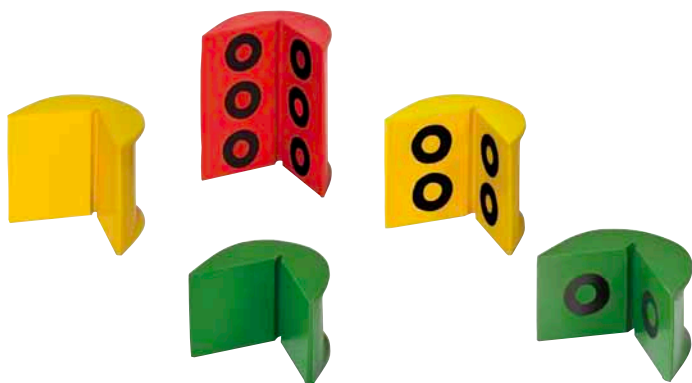
Economical solution to protect webbing slings and round slings against wear caused by abrasion.



! Not suitable for protection
against sharp edges

Technical data model PU-SG

Model	EAN-No. 4025092*	Width approx. mm	Length mm	Diameter mm	Suitable for round slings up to WLL kg
PU-SG-040	*352840	60	1000	40	2000
PU-SG-063	*352857	95	1000	63	3000
PU-SG-075	*352864	115	1000	75	6000
PU-SG-090	*352871	140	1000	90	8000
PU-SG-110	*352888	170	1000	110	10000
PU-SG-150	*352895	230	1000	150	15000



Edge protection profile, with and without magnets model PU-KSE

From colour coded polyurethane, extremely abrasive and cut resistant.

Technical data model PU-KSE

Model	EAN-No. 4025092*	Colour mm	Webbing width mm	Number of magnets
PU-KSE-065	*912303	green	60	–
PU-KSE-100	*912310	yellow	90	–
PU-KSE-125	*912327	grey	120	–
PU-KSE-150	*912389	red	150	–
PU-KSE-200	*912396	black	180	–
PU-KSE-300	*912402	orange	300	–

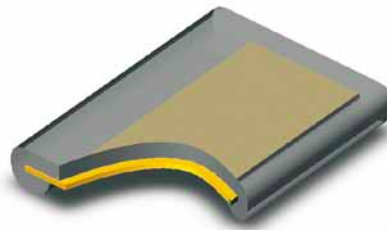
Technical data model PU-KSE-MAG

Model	EAN-No. 4025092*	Colour mm	Webbing width mm	Number of magnets
PU-KSE-065-MAG	*912419	green	60	2
PU-KSE-100-MAG	*912426	yellow	90	4
PU-KSE-125-MAG	*912433	grey	120	4
PU-KSE-150-MAG	*912440	red	150	4
PU-KSE-200-MAG	*912457	black	180	6
PU-KSE-300-MAG	*912464	orange	300	8

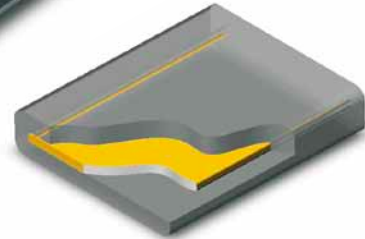
PU-coating, single and double-sided model PU-FB

Made from transparent polyurethane

Extremely wear and cut resistant. The coating is permanently fixed to the webbing and cannot be lost during usage.



Coating single-sided,
model PU-FB 1



Coating double-sided,
model PU-FB 2

Technical data model PU-FB, single-sided

Model	EAN-No. 4025092*	Webbing width mm	Width mm	Length mm
PU-FB1-030	*358620	30	40	1000
PU-FB1-050	*352529	50	60	1000
PU-FB1-060	*352536	60	70	1000
PU-FB1-090	*352543	90	100	1000
PU-FB1-120	*352550	120	130	1000
PU-FB1-150	*352567	150	160	1000
PU-FB1-180	*352574	180	190	1000
PU-FB1-240	*352581	240	250	1000
PU-FB1-300	*352598	300	310	1000

Technical data model PU-FB, double-sided

Model	EAN-No. 4025092*	Webbing width mm	Width mm	Length mm
PU-FB2-030	*358637	30	40	1000
PU-FB2-050	*352604	50	60	1000
PU-FB2-060	*352611	60	70	1000
PU-FB2-090	*352628	90	100	1000
PU-FB2-120	*352635	120	130	1000
PU-FB2-150	*352642	150	160	1000
PU-FB2-180	*352659	180	190	1000
PU-FB2-240	*352666	240	250	1000
PU-FB2-300	*352673	300	310	1000